



MetroWest+

Portishead Branch Line (MetroWest Phase 1)

TR040011

Applicant: North Somerset District Council

6.25, Environmental Statement, Volume 4, Technical Appendices, Appendix 16.1:

Transport Assessment (Part 2 of 18) – FIGURES vol 1

The Infrastructure Planning (Applications: Prescribed Forms and Procedure)

Regulations 2009, Regulation 5(2)(a)

Planning Act 2008

Author: CH2M

Date: November 2019



The latest Trinity Footbridge plans are contained within documents 2.15-2.17.

LIST OF FIGURES – in Part 2 of Appendix 16.1

- Figure 3 1: Indicative Portishead station preferred option – Drawing 1
- Figure 3 2: Indicative Portishead station preferred option - Drawing 2
- Figure 3 3: Indicative Portishead station preferred option - Drawing 3
- Figure 3 4: Indicative Pill station preferred option - Drawing 1
- Figure 3 5: Indicative Pill station preferred option - Drawing 2
- Figure 3 6: Indicative Pill station preferred option- Drawing 3
- Figure 3 7: Indicative proposed parking restrictions in Portishead
- Figure 3 8: Indicative proposed parking restrictions in Pill
- Figure 3 9: Trinity Pedestrian Footbridge General Arrangement (sheet 1)
- Figure 3 10: Trinity Pedestrian Footbridge General Arrangement (sheet 2)
- Figure 3 11: Proposed pedestrian/cycle footbridge at Ashton Vale
- Figure 3 12: Barons Close Pedestrian Crossing Point (currently closed)
- Figure 3 13: Proposed Portishead and Sheepway Maintenance and Emergency
Accesses
- Figure 3 14: Proposed Pill and Avon Gorge Maintenance and Emergency Accesses
- Figure 3 15: Proposed Ashton Vale Maintenance and Emergency Accesses

SECTION 3

Scheme Proposals

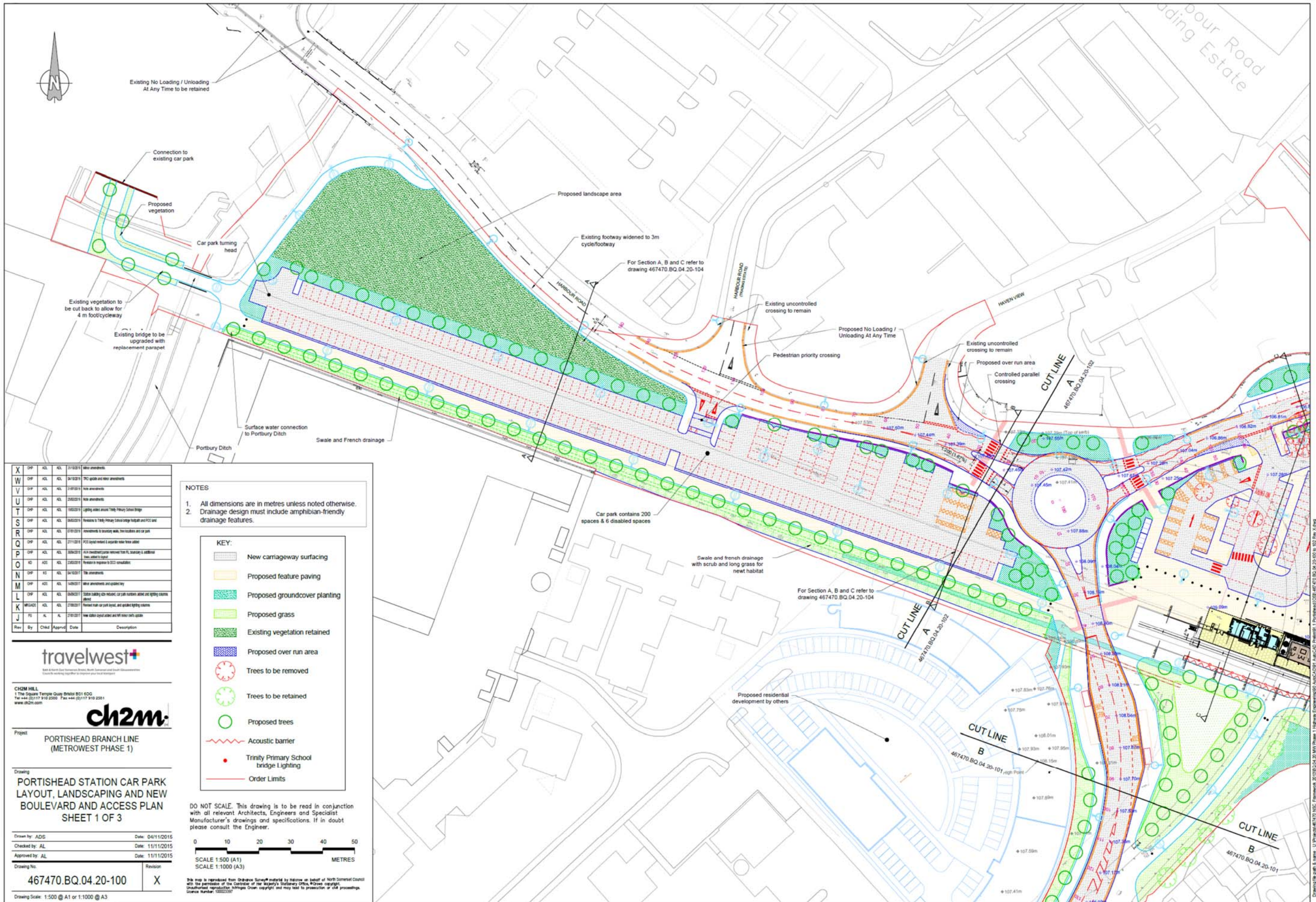


Figure 3-1: Indicative Portishead station preferred option – Drawing 1

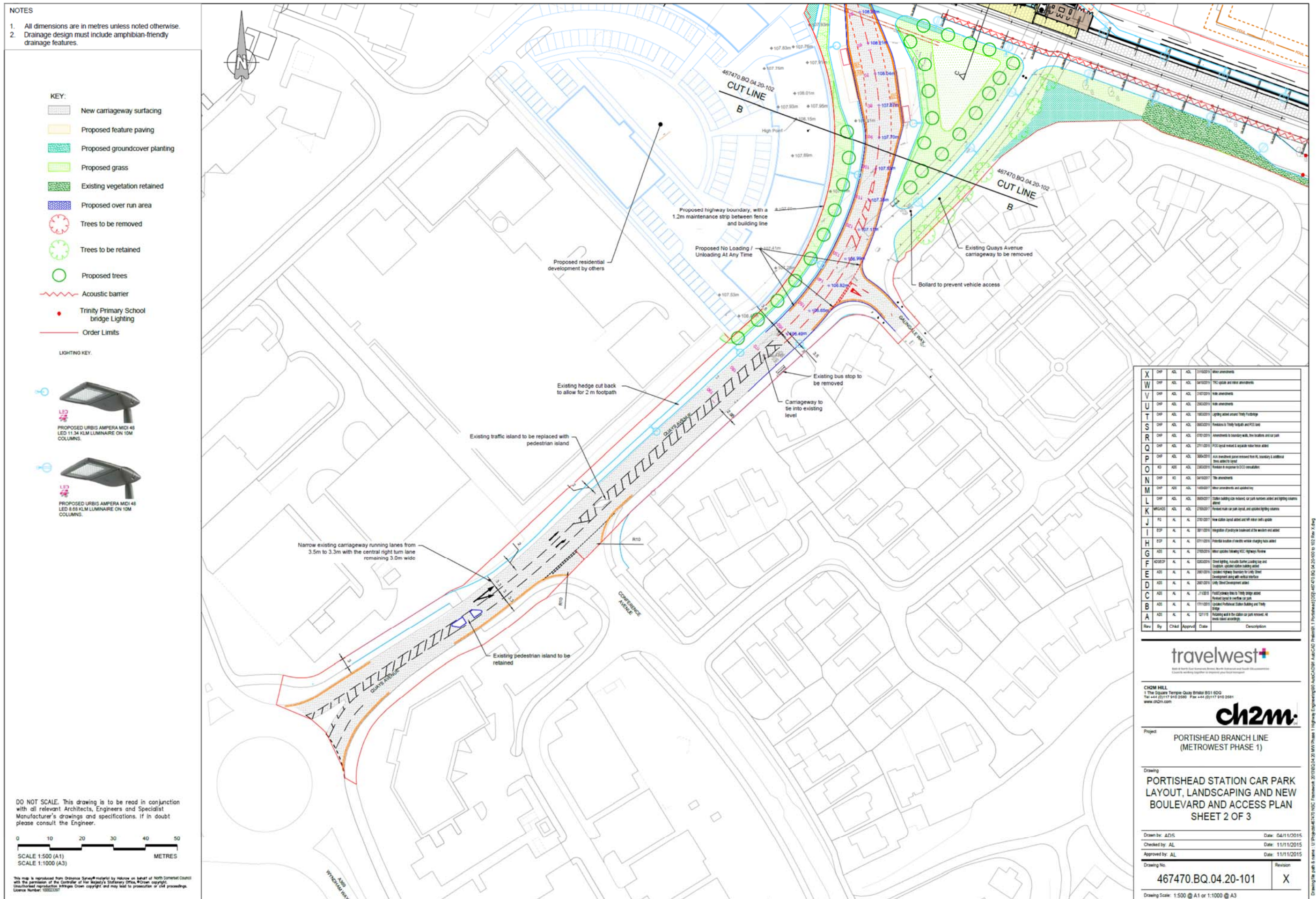


Figure 3-2: Indicative Portishead station preferred option - Drawing 2

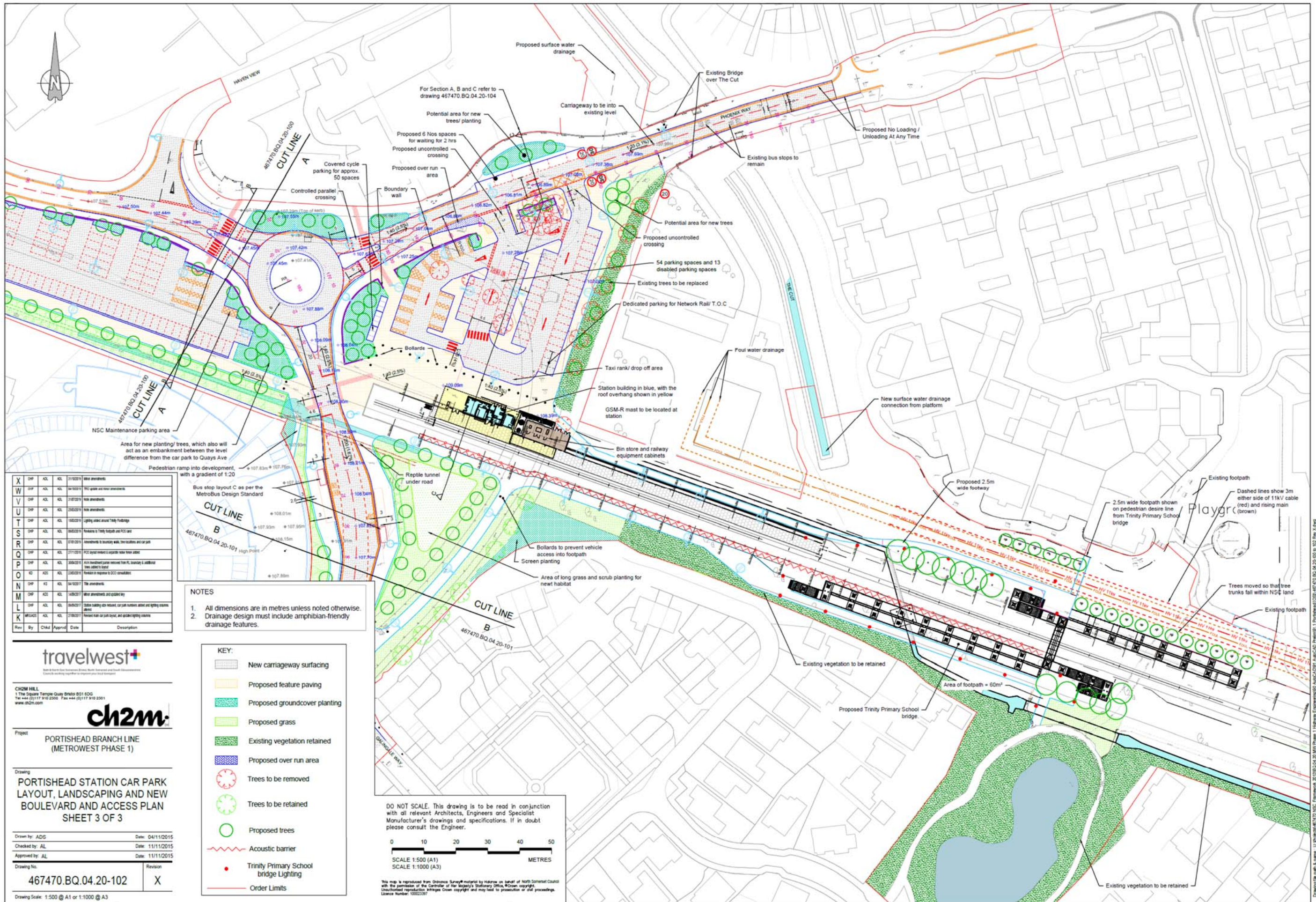


Figure 3-3: Indicative Portishead station preferred option - Drawing 3

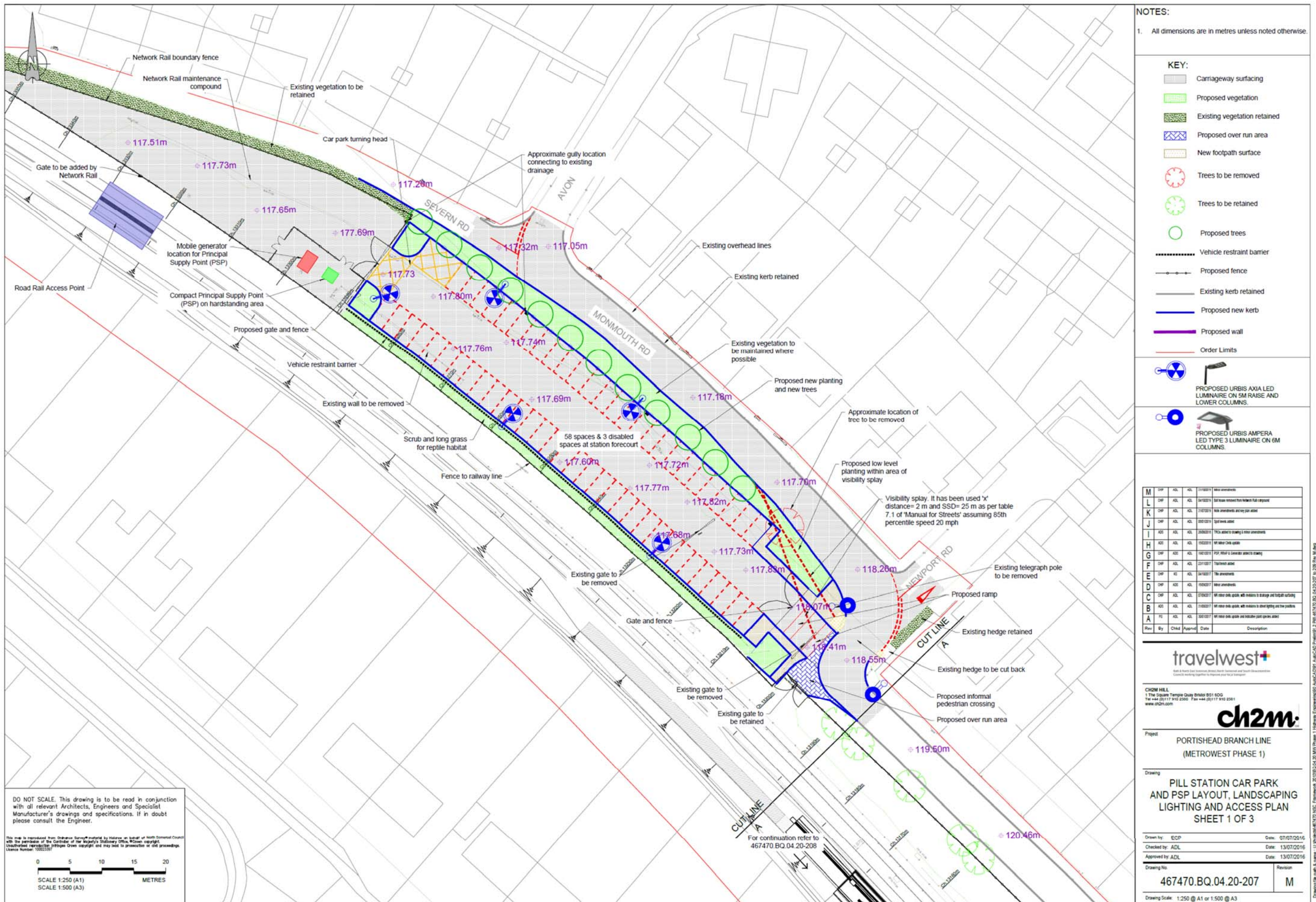


Figure 3-4: Indicative Pill station preferred option - Drawing 1

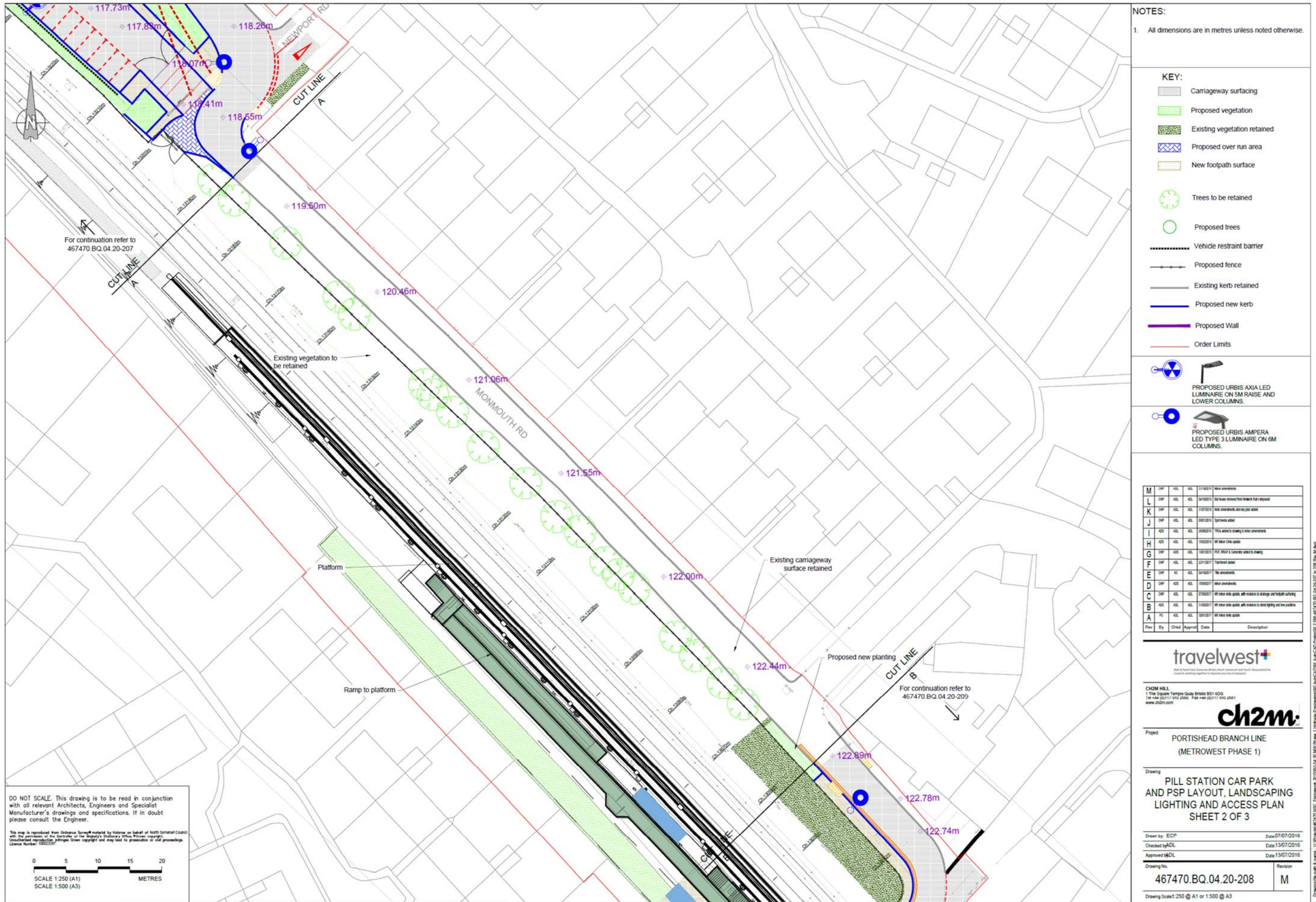


Figure 3-5: Indicative Pill station preferred option - Drawing 2

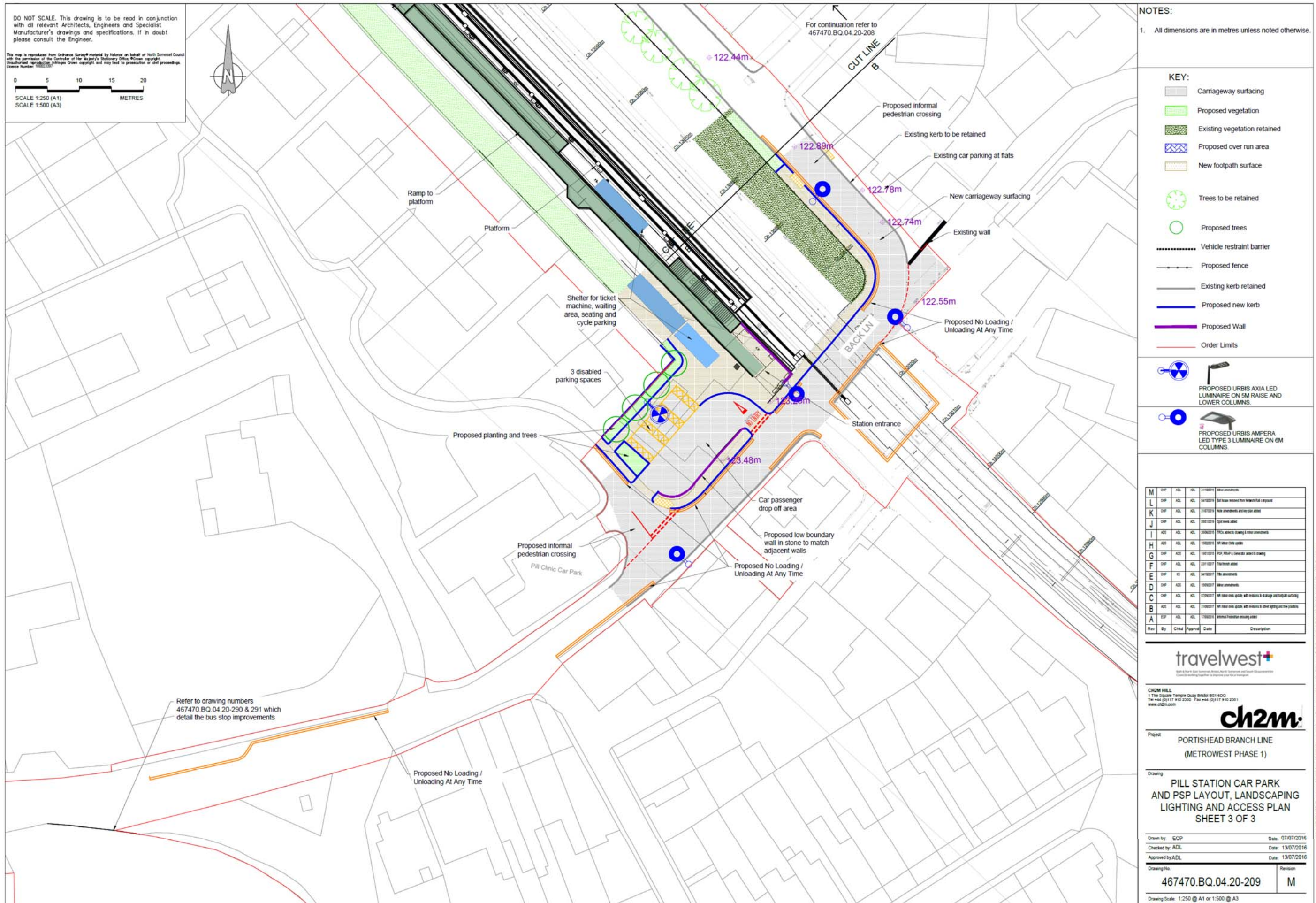


Figure 3-6: Indicative Pill station preferred option- Drawing 3

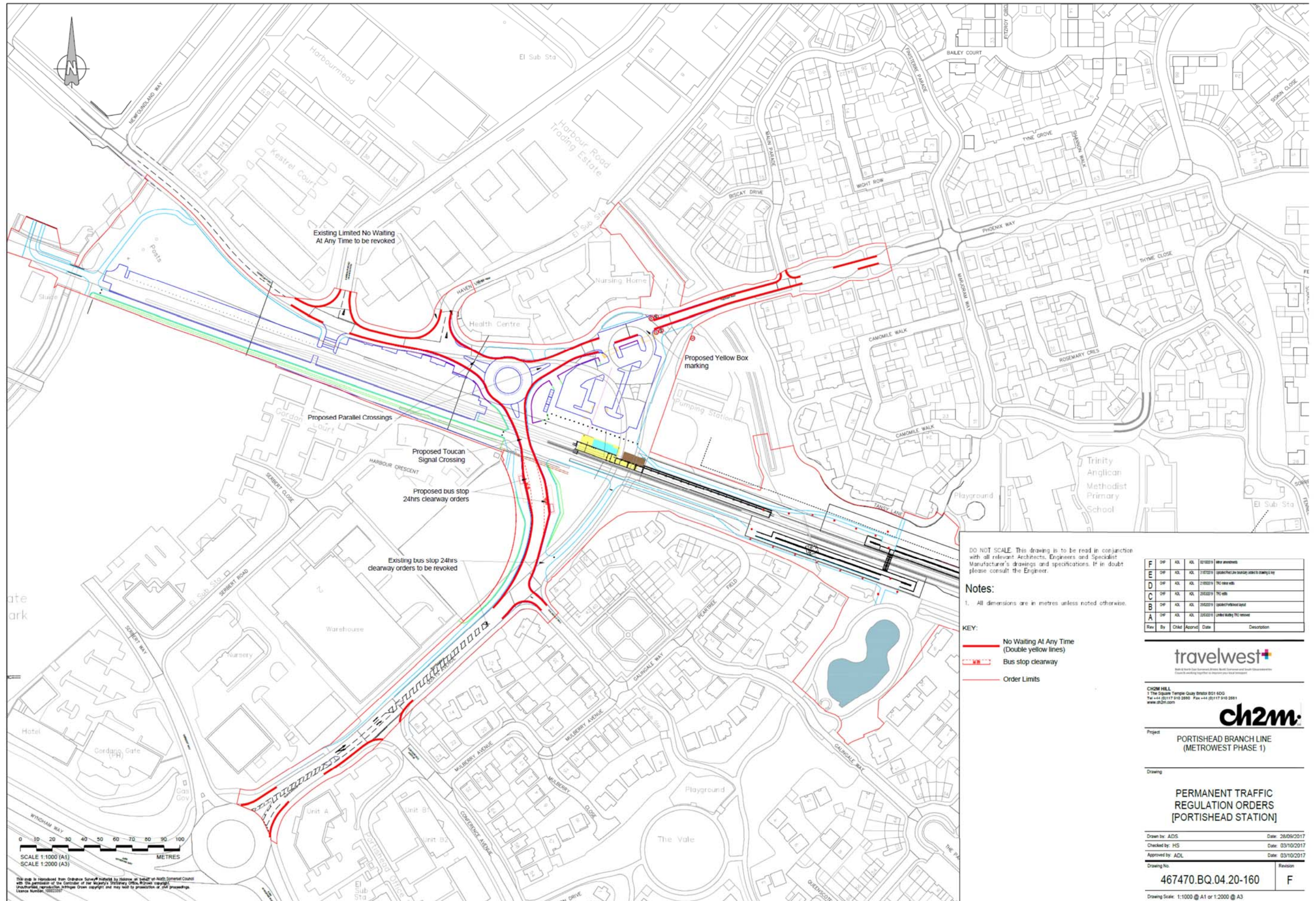


Figure 3-7: Indicative proposed parking restrictions in Portishead

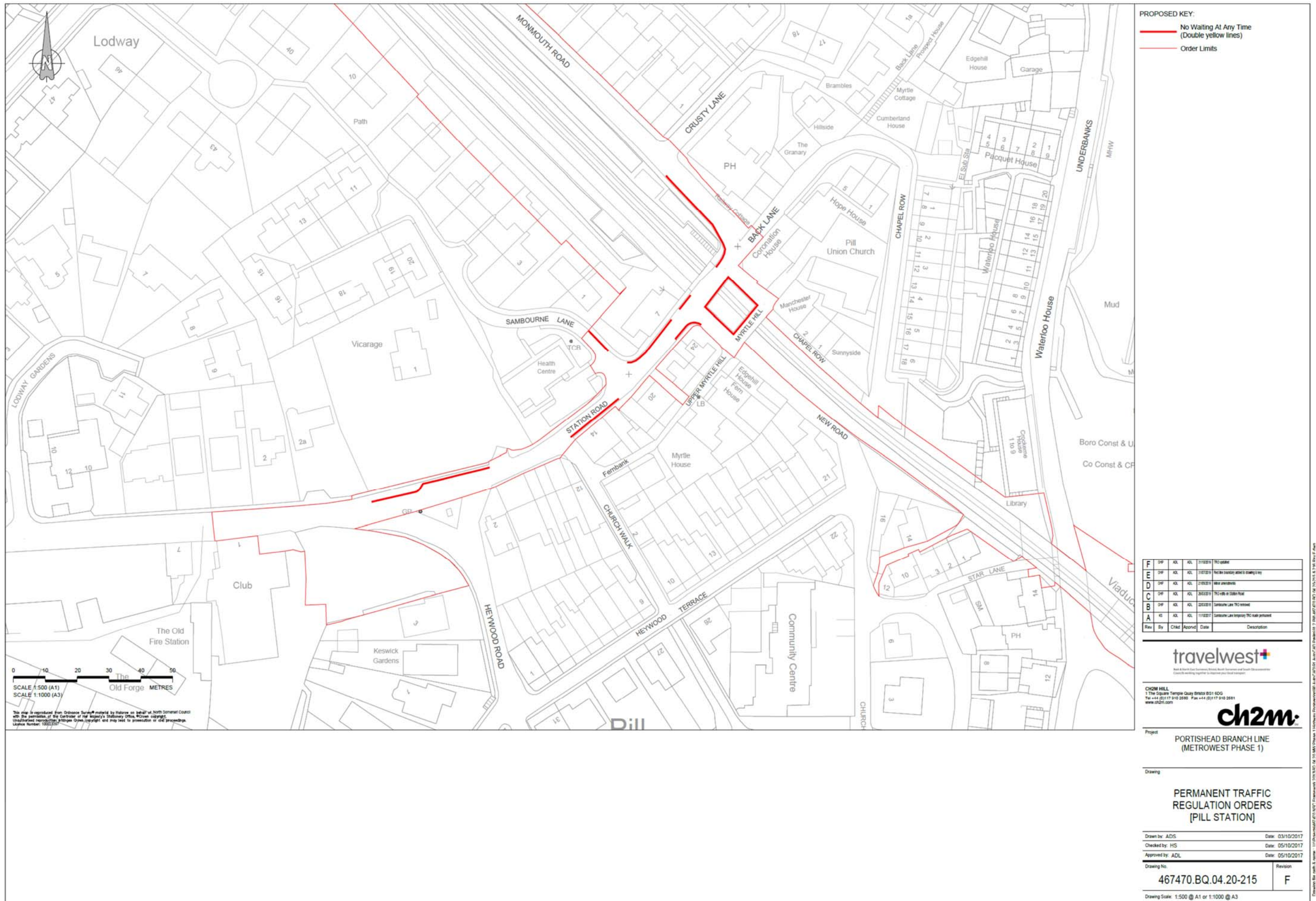


Figure 3-8: Indicative proposed parking restrictions in Pill

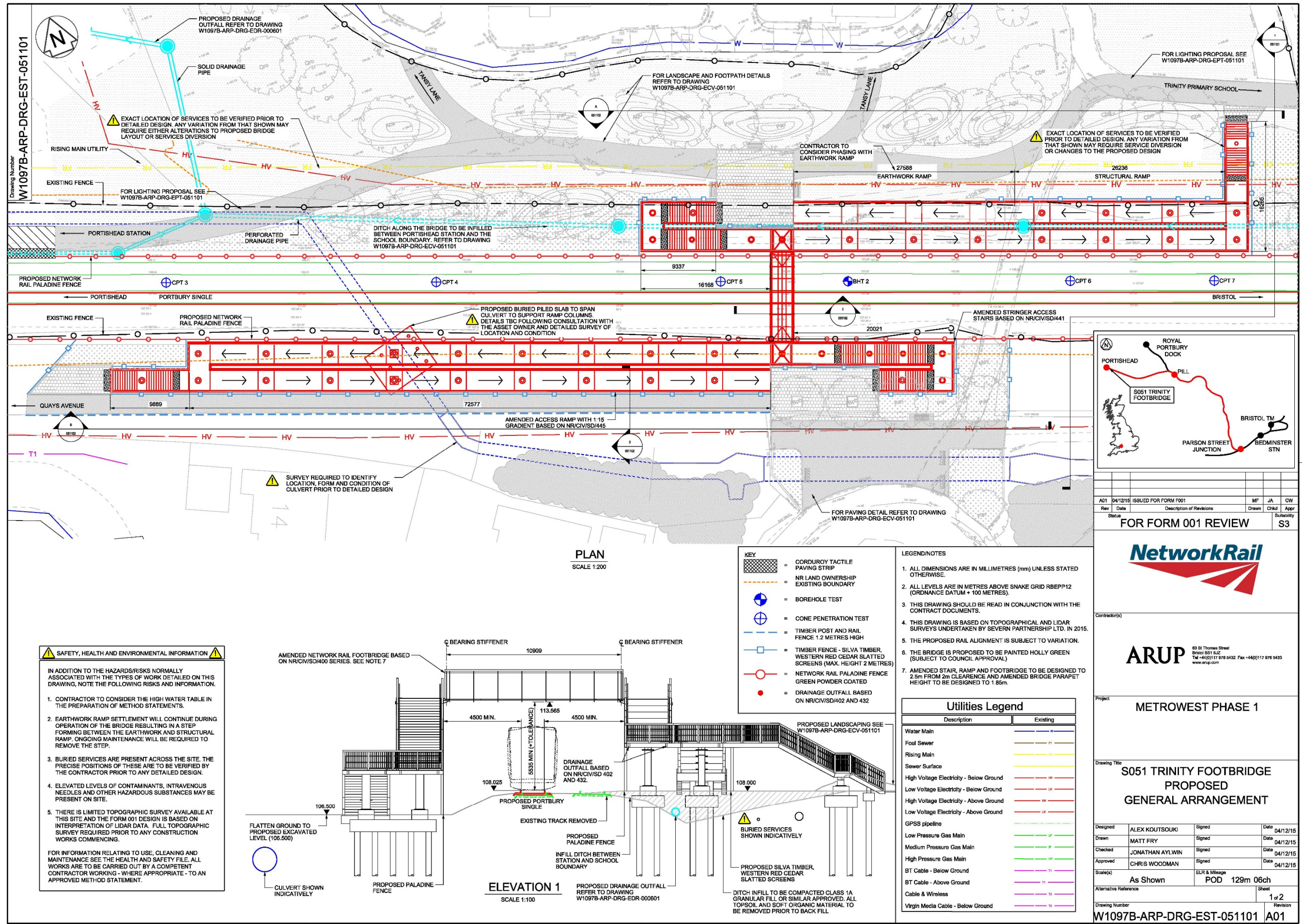
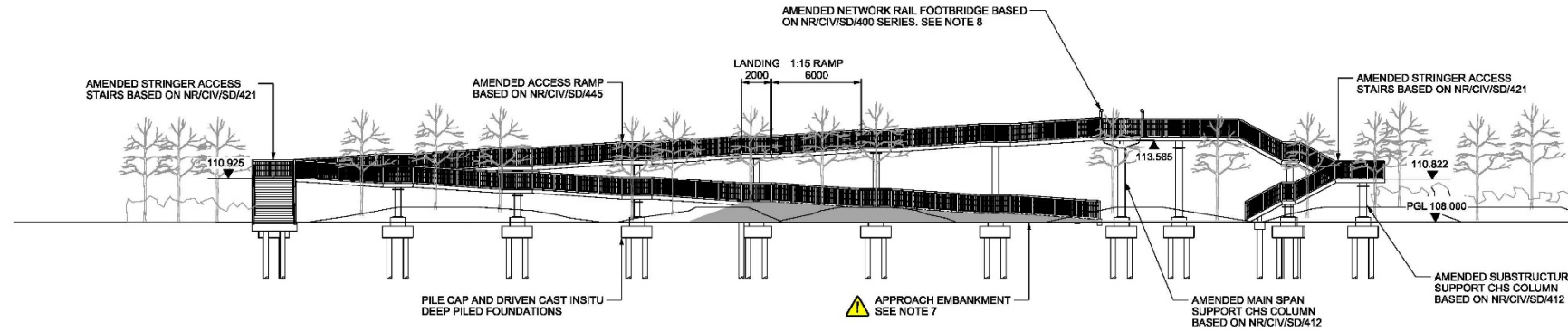
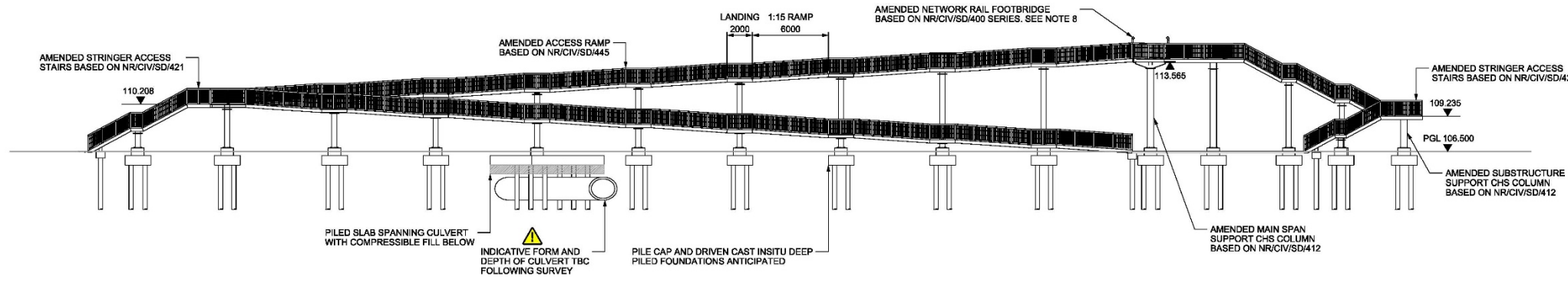


Figure 3-9: Trinity Pedestrian Footbridge General Arrangement (sheet 1)

Drawing Number
W1097B-ARP-DRG-EST-051102



NORTHERN ELEVATION A
SCALE 1:200



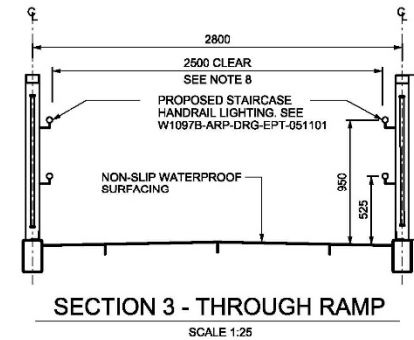
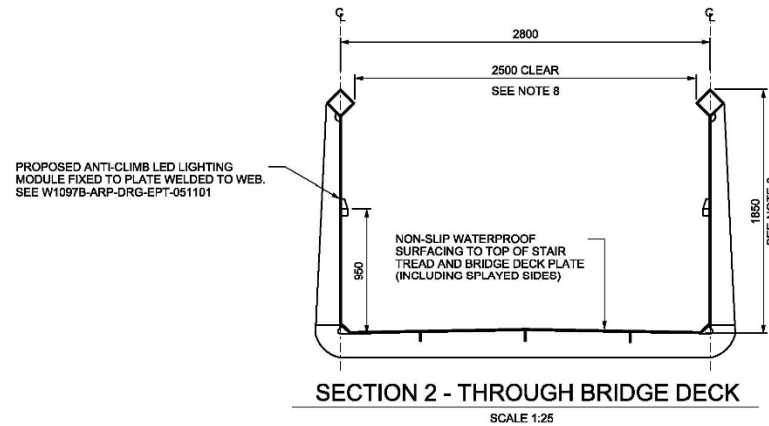
SOUTHERN ELEVATION B
SCALE 1:200

SAFETY, HEALTH AND ENVIRONMENTAL INFORMATION

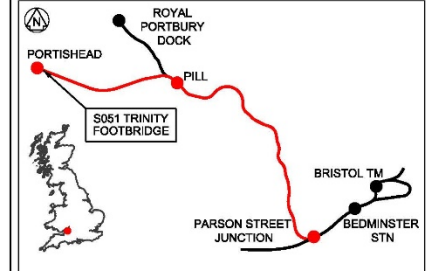
IN ADDITION TO THE HAZARDS/RISKS NORMALLY ASSOCIATED WITH THE TYPES OF WORK DETAILED ON THIS DRAWING, NOTE THE FOLLOWING RISKS AND INFORMATION.

- CONTRACTOR TO CONSIDER THE HIGH WATER TABLE IN THE PREPARATION OF METHOD STATEMENTS.
- EARTHWORK RAMP SETTLEMENT WILL CONTINUE DURING OPERATION OF THE BRIDGE RESULTING IN A STEP FORMING BETWEEN THE EARTHWORK AND STRUCTURAL RAMP. ONGOING MAINTENANCE WILL BE REQUIRED TO REMOVE THE STEP.
- BURIED SERVICES ARE PRESENT ACROSS THE SITE. THE PRECISE POSITIONS OF THESE ARE TO BE VERIFIED BY THE CONTRACTOR PRIOR TO ANY DETAILED DESIGN.
- ELEVATED LEVELS OF CONTAMINANTS, INTRAVENOUS NEEDLES AND OTHER HAZARDOUS SUBSTANCES MAY BE PRESENT ON SITE.
- THERE IS LIMITED TOPOGRAPHIC SURVEY AVAILABLE AT THIS SITE AND THE FORM 001 DESIGN IS BASED ON INTERPRETATION OF LIDAR DATA. FULL TOPOGRAPHIC SURVEY REQUIRED PRIOR TO ANY CONSTRUCTION WORKS COMMENCING.

FOR INFORMATION RELATING TO USE, CLEANING AND MAINTENANCE SEE THE HEALTH AND SAFETY FILE. ALL WORKS ARE TO BE CARRIED OUT BY A COMPETENT CONTRACTOR WORKING - WHERE APPROPRIATE - TO AN APPROVED METHOD STATEMENT.



- Legend/Notes**
- ALL DIMENSIONS ARE IN MILLIMETRES (mm) UNLESS STATED OTHERWISE.
 - ALL LEVELS ARE IN METRES ABOVE SNAKE GRID RBEP12 (ORDNANCE DATUM + 100 METRES).
 - THIS DRAWING SHOULD BE READ IN CONJUNCTION WITH THE CONTRACT DOCUMENTS.
 - THIS DRAWING IS BASED ON TOPOGRAPHICAL AND LIDAR SURVEYS UNDERTAKEN BY SEVERN PARTNERSHIP LTD. IN 2015.
 - THE PROPOSED RAIL ALIGNMENT IS SUBJECT TO VARIATION.
 - THE BRIDGE IS PROPOSED TO BE PAINTED HOLLY GREEN (SUBJECT TO COUNCIL APPROVAL).
 - APPROACH EMBANKMENT WILL SETTLE (POTENTIALLY UP TO 300mm). CONSTRUCTION PHASING AND METHODOLOGY SHOULD BE DESIGNED TO ENSURE THAT THE MAJORITY OF THIS MOVEMENT IS COMPLETE PRIOR TO CONSTRUCTION OF THE CONNECTING BRIDGE RAMPS. THIS COULD ENTAIL SURCHARGING FOR A PERIOD OF TIME PRIOR TO BRIDGE CONSTRUCTION (INSTALLATION OF BAND DRAINS COULD SPEED UP THIS PROCESS). NOTE THAT SOME ONGOING CREEP MOVEMENT WILL STILL OCCUR DURING THE STRUCTURES DESIGN LIFE.
 - AMENDED STAIR, RAMP AND FOOTBRIDGE TO BE DESIGNED TO 2.5m FROM 2m CLEARANCE AND AMENDED BRIDGE PARAPET HEIGHT TO BE DESIGNED TO 1.85m.



Rev	Date	Description of Revisions	Drawn	Chkd	Appr	Submittal
A01	04/12/15	ISSUED FOR FORM F001	MF	JA	CW	S3

FOR FORM 001 REVIEW



Project: **METROWEST PHASE 1**

Drawing Title: **S051 TRINITY FOOTBRIDGE PROPOSED GENERAL ARRANGEMENT**

Designed	ALEX KOUTSOUKI	Signed		Date	04/12/15
Drawn	MATT FRY	Signed		Date	04/12/15
Checked	JONATHAN AYLWIN	Signed		Date	04/12/15
Approved	CHRIS WOODMAN	Signed		Date	04/12/15
Scale(s)	As Shown		E.I.R & Mileage	POD 129m 06ch	
Alternative Reference			Sheet	2 of 2	
Drawing Number	W1097B-ARP-DRG-EST-051102		Revision	A01	

Figure 3-10: Trinity Pedestrian Footbridge General Arrangement (sheet 2)

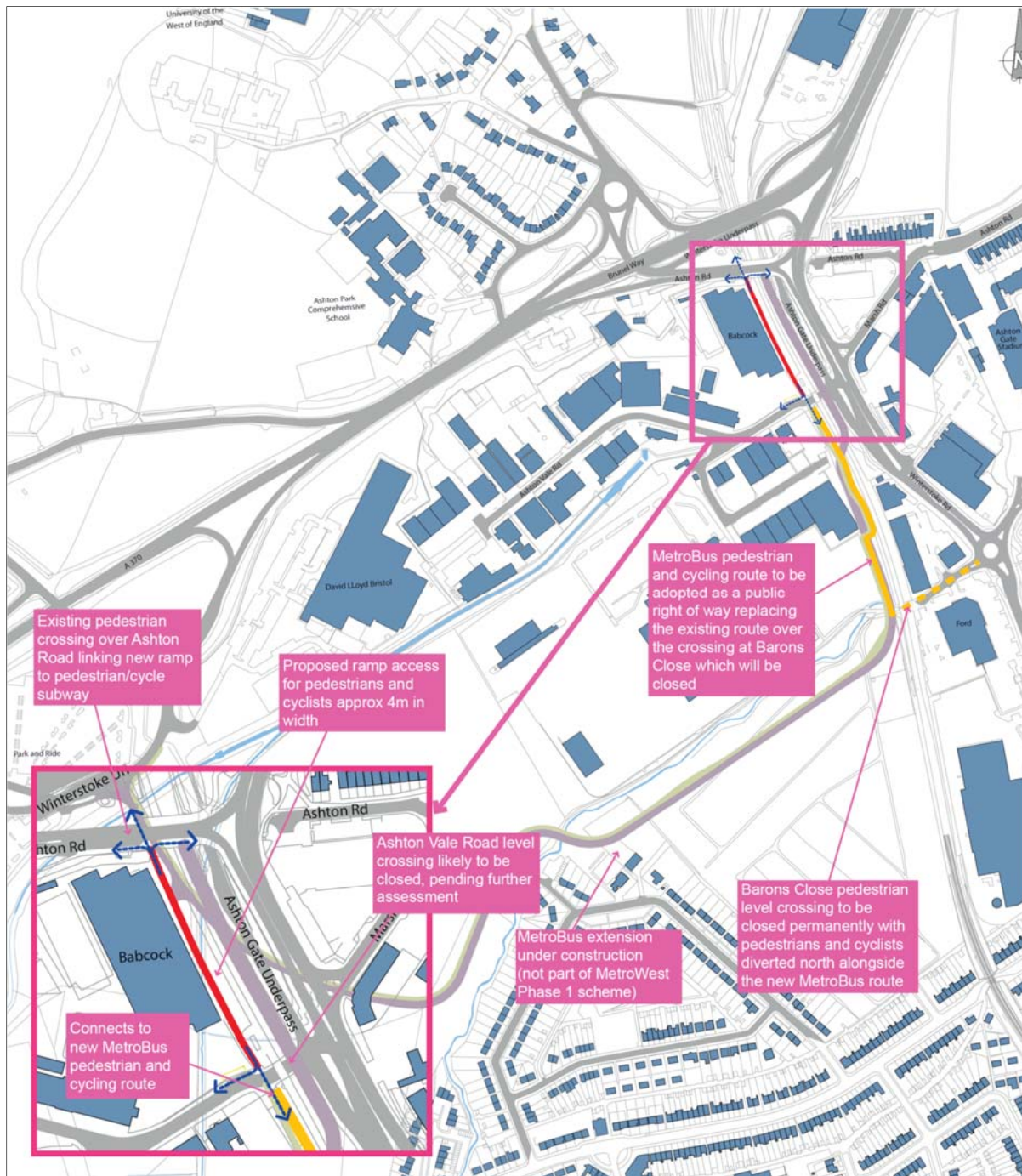
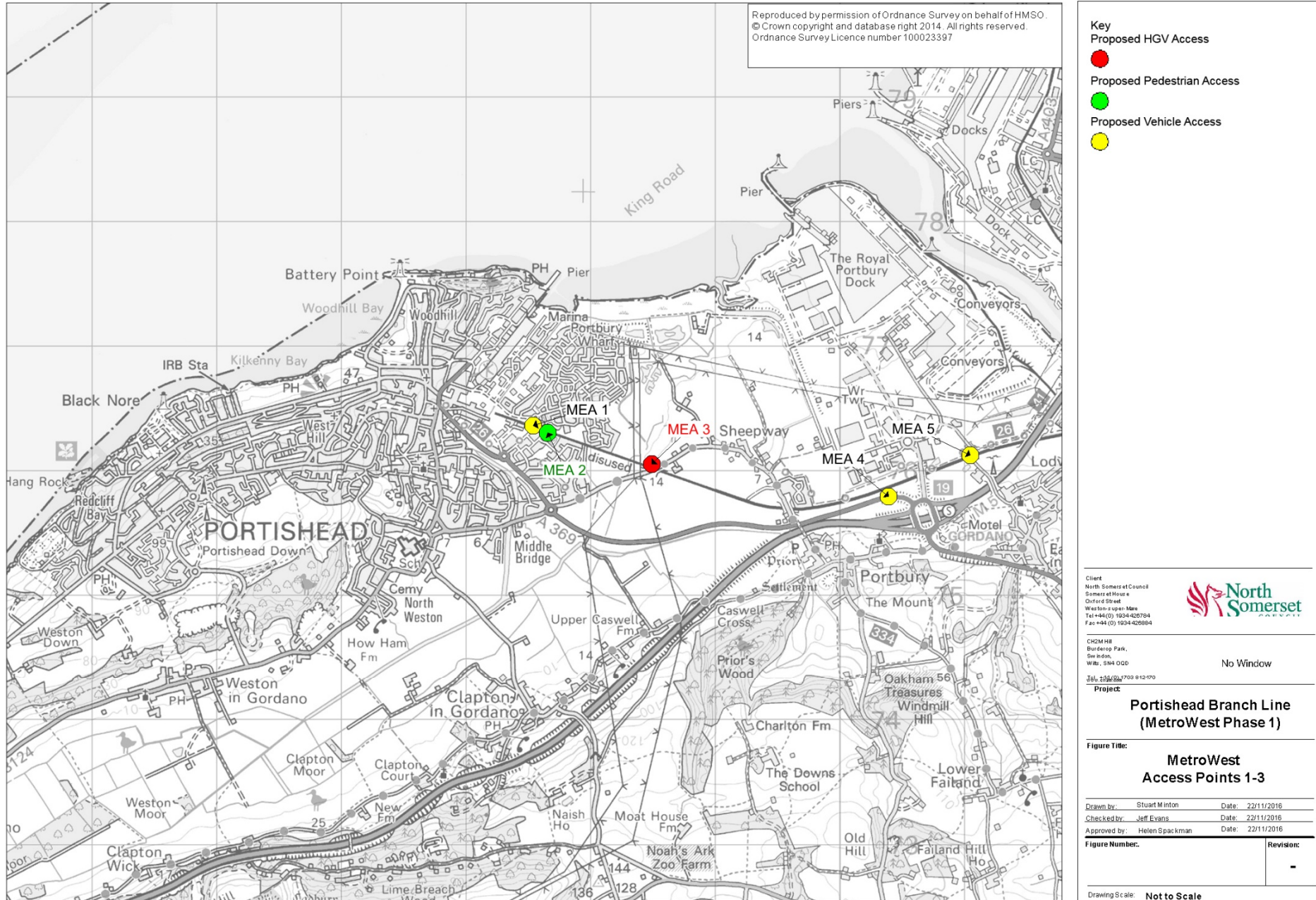


Figure 3-11: Proposed pedestrian/cycle footbridge at Ashton Vale



Client
North Somerset Council
Somerset House
Oxford Street
Weston-super-Mare
Tel +44 (0) 1934 426784
Fax +44 (0) 1934 426884

CH2M Hill
Burderoo Park,
Sew Inford,
Walsley, S14 0DD

North Somerset Council

Project
**Portishead Branch Line
(MetroWest Phase 1)**

Figure Title:
**MetroWest
Access Points 1-3**

Drawn by: Stuart Minton	Date: 22/11/2016
Checked by: Jeff Evans	Date: 22/11/2016
Approved by: Helen Spackman	Date: 22/11/2016

Figure Number:	Revision:
	-

Drawing Scale: **Not to Scale**

Figure 3-13: Proposed Portishead and Shepway Maintenance and Emergency Accesses

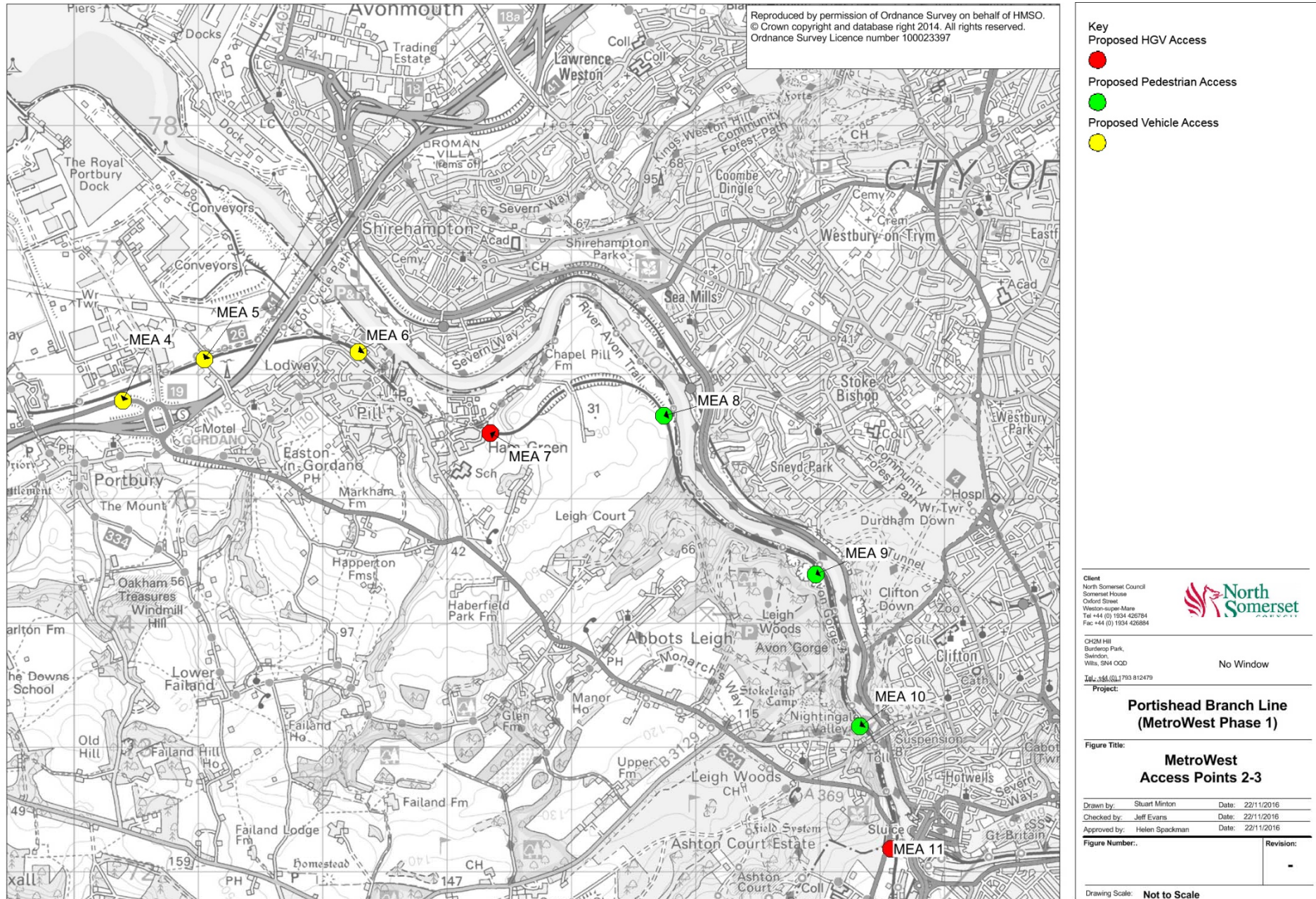


Figure 3-14: Proposed Pill and Avon Gorge Maintenance and Emergency Accesses

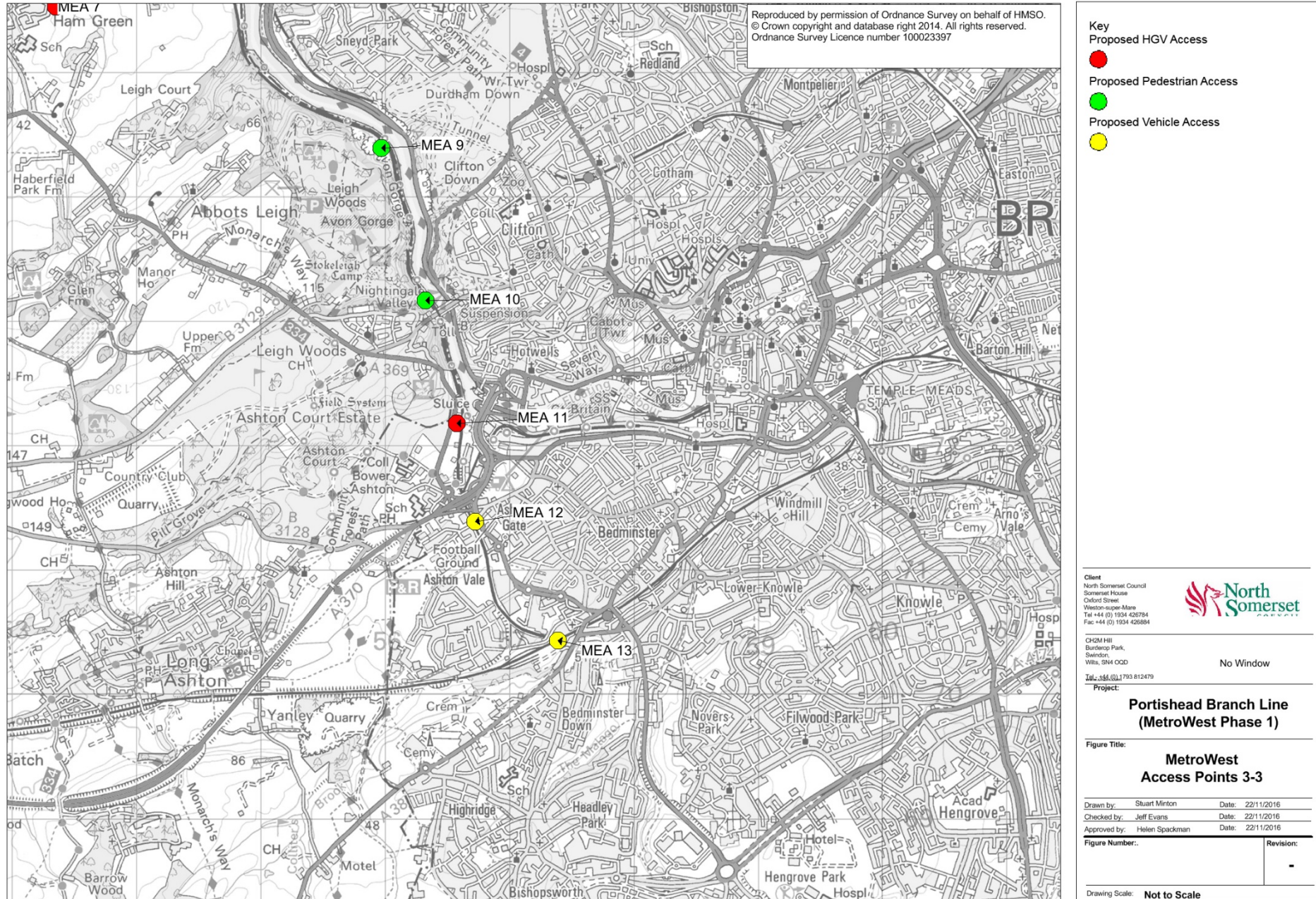


Figure 3-15: Proposed Ashton Vale Maintenance and Emergency Accesses